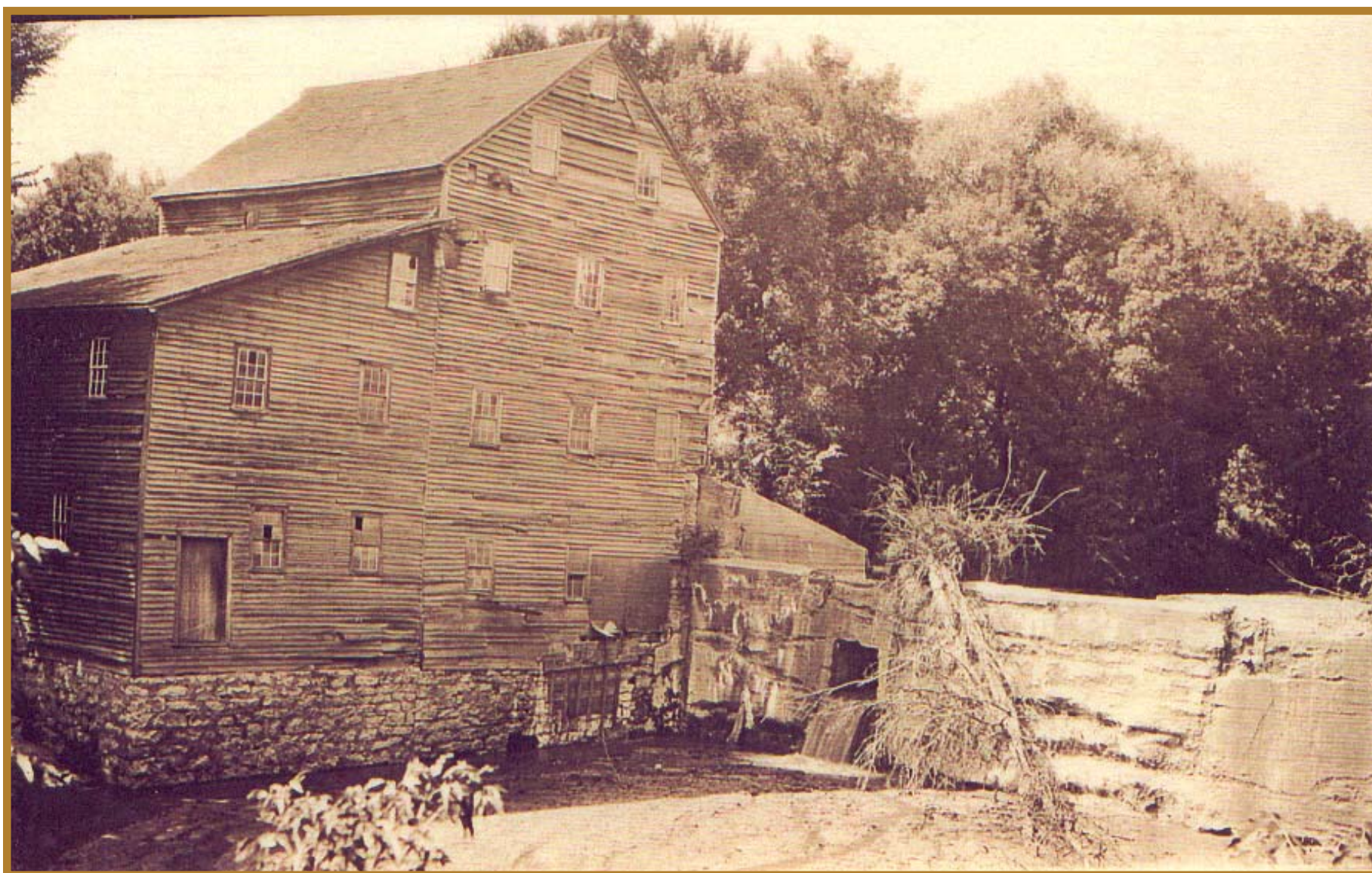


## Pine Mill in the Past



Pine Mill after it closed in the late 1920's. The dam had collapsed and siding had started to fall off the building.



1927 The State of Iowa purchased the mill and began its first restoration saving the mill.

The Old Settler's Picnic at the mouth of Pine Creek September 25<sup>th</sup>, 1884.  
Steamboat "John M. Abbott"

